



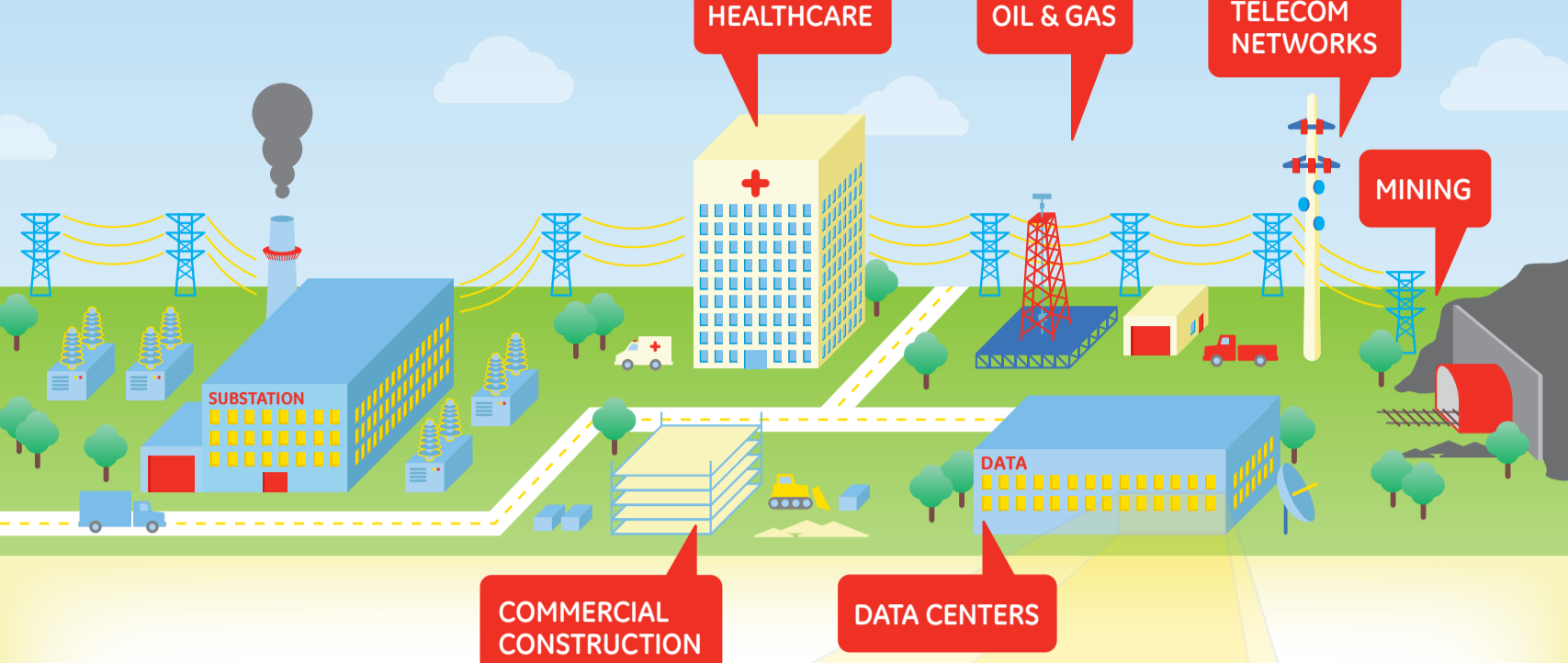
Industrial Solutions



Industrial Solutions, a GE heritage business, leads the future of electrification with advanced technologies that protect and control the distribution of electricity.

PRIORITY INDUSTRIES

We provide customers, across various industries, with end-to-end product and service solutions that ensure the reliability and protection of the electrical infrastructure; from the substation, to a facility's critical equipment, and all the power technologies in between.



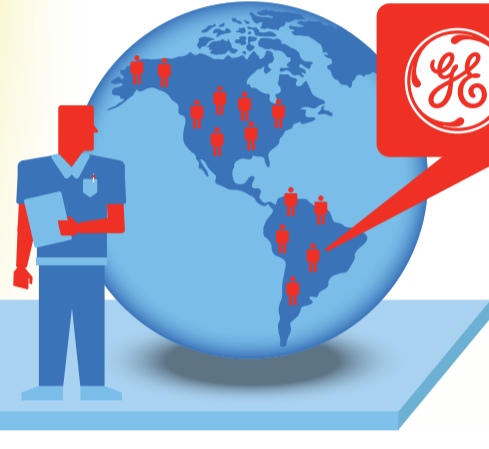
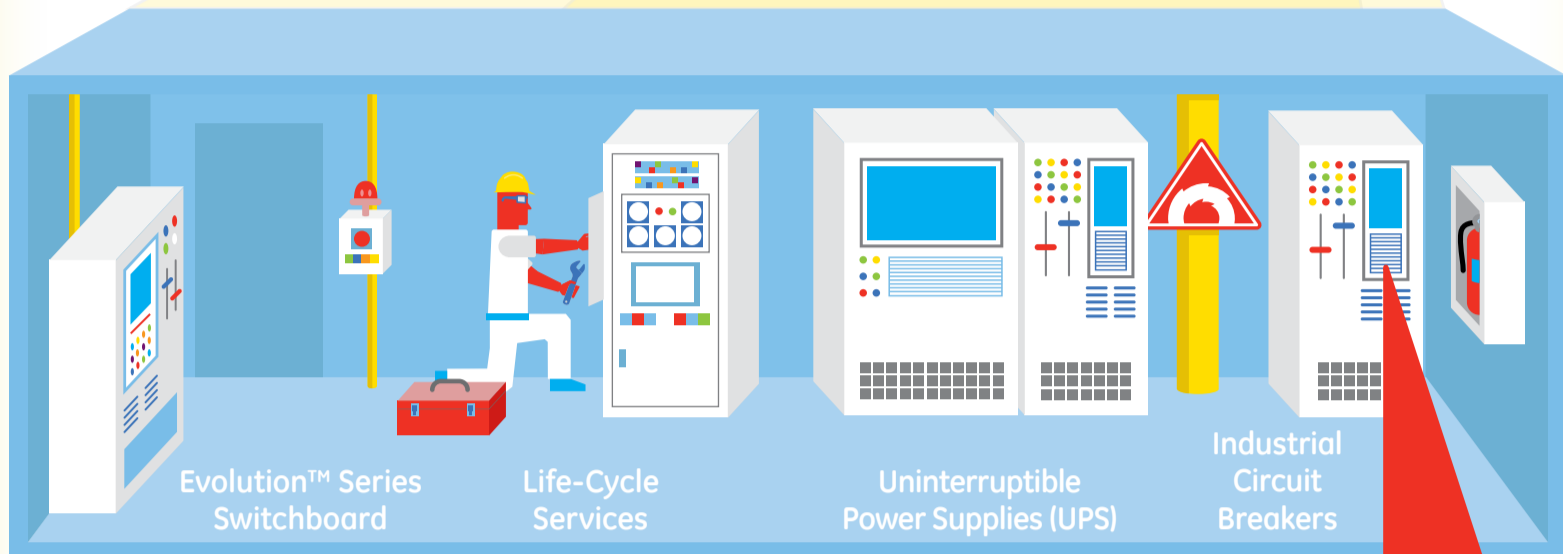
GE Industrial Solutions is comprised of four business units:

POWER EQUIPMENT

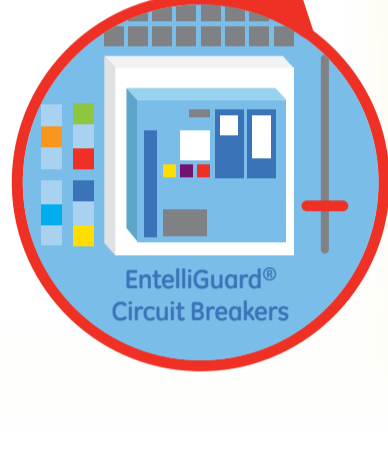
SERVICES

CRITICAL POWER

POWER COMPONENTS



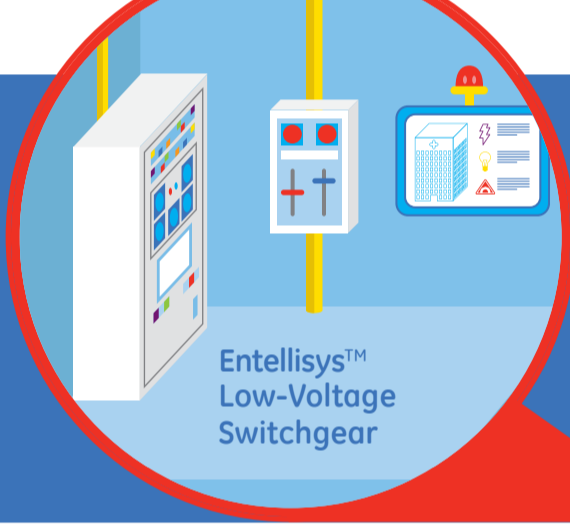
13,500 employees in 60 countries



POWER EQUIPMENT

PRODUCTS INCLUDE:

- **Medium-Voltage Equipment:** switchgear, motor control centers and VCBS
- **Low-Voltage Equipment:** switchgear, panelboards, motor control centers and enclosures
- **Power Delivery Equipment:** power transformers, cast coil transformers, low- and medium-voltage busway



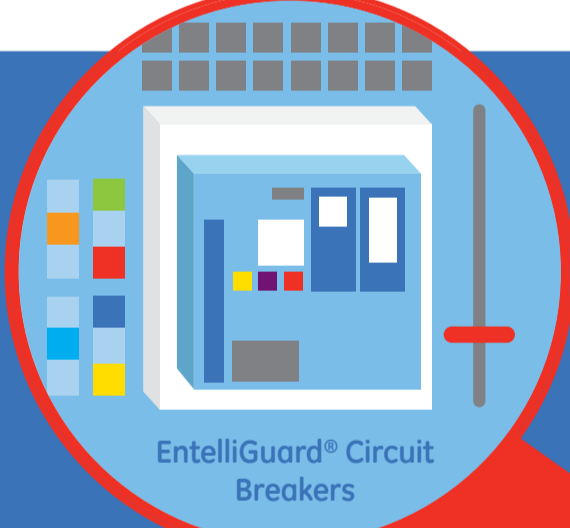
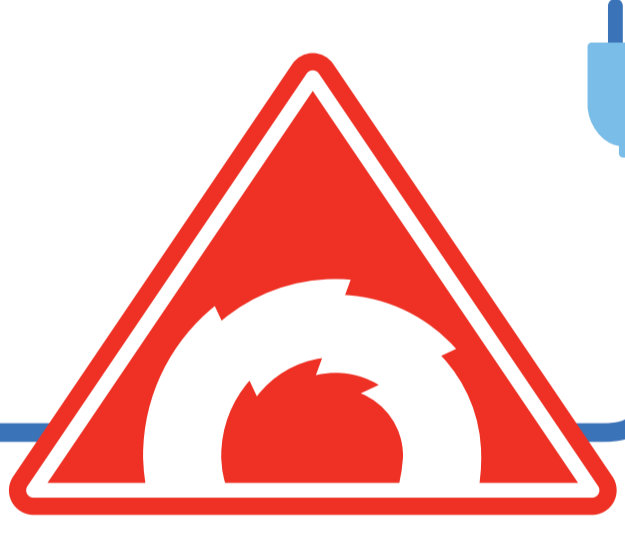
SOLUTION SPOTLIGHT:

INTEGRATED POWER SYSTEM. St. Vincent's Hospital is the longest-serving hospital in Birmingham, Ala. The hospital relies on GE's Entellisys™ Low-Voltage Switchgear system to meet OSHA requirements and provide arc flash protection.

POWER COMPONENTS

PRODUCTS INCLUDE:

- **Industrial Circuit Breakers**
- **Modular Components**
- **Controls**
- **Dry Type Transformers**
- **Safety Switches**
- **Load Centers**
- **Electric Vehicle Service Equipment**



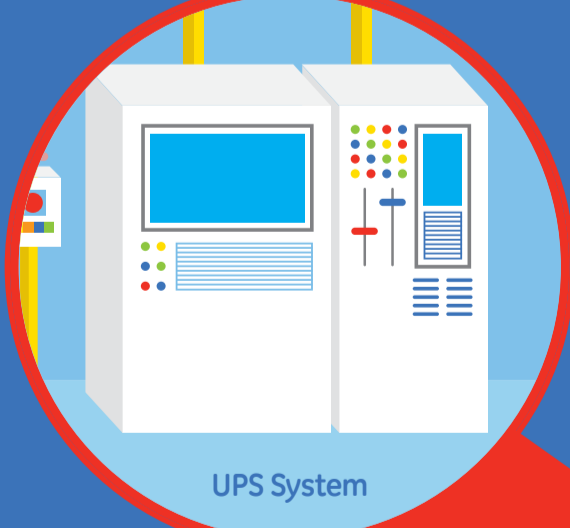
SOLUTION SPOTLIGHT:

SELECTIVITY COMBINED WITH ARC FLASH MITIGATION. GE's circuit breaker-trip unit system harnesses Instantaneous Zone Selective Interlocking (I-ZSI) communications technology to deliver selective coordination without compromising arc flash mitigation.

CRITICAL POWER

PRODUCTS INCLUDE:

- **Uninterruptible Power Supply (UPS) Systems**
- **Power Switching Solutions:** paralleling switchgear, automatic transfer switches and surge suppression devices
- **Energy Systems (DC Power)**
- **Embedded Power:** board mounted DC-DC converter modules and AC-DC power supplies
- **UPS Retrofit Financing Program**



SOLUTION SPOTLIGHT:

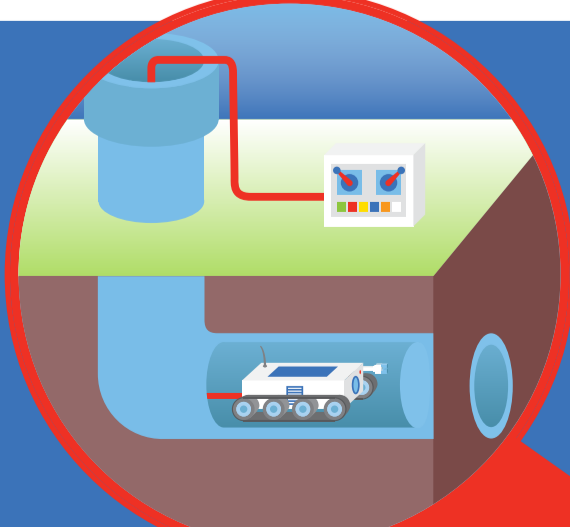
UNINTERRUPTIBLE POWER SUPPLY (UPS). The Swiss National Supercomputing Center helps researchers understand earthquakes, cardiovascular dynamics and other high-impact topics.

GE's UPS system, ensures ongoing power for critical research and reduces the operating costs and environmental impact by almost \$80,000 and 800,000 kWh per year.

SERVICES

SERVICES INCLUDE:

- **Arc Flash Services**
- **Emergency Services**
- **Inspection Services**
- **Maintenance Services**
- **Power Delivery and Safety Services**
- **Monitoring Services** (Remote and On-site)



SOLUTION SPOTLIGHT:

STATE-OF-THE-ART MAINTENANCE REDUCES FAILURE.

Underground piping system maintenance is one example of an ongoing concern of industrial and power facilities. GE's Buried Pipe Inspection Service uses a self-propelled robot to examine piping systems, collect real-time data and recommend proactive steps to prevent failures.

To learn more about GE's Industrial Solutions business, visit us at www.geindustrial.com